

- **Village Halls, Fêtes and events**
- **'The Three Village Halls' by Stuart Miller 2011**  
Appendix: extract from 'The Village Gilds of Cambridgeshire' by *W.M.Palmer 1904*  
Part of 'Transactions of the Cambridgeshire and Huntingdonshire Archaeological Society', vol.1  
By courtesy of Cambridgeshire Archives
- **Garden Shows, Fêtes and events**  
Garden show programmes by courtesy of Christine Newman  
Fete and event posters by courtesy of Nita Miller
- **Press Cuttings**

# The three Village Halls

## The first Hall

The earliest recorded Hall in Horseheath is a Gildhall built in 1527. There are no records as to its location in the Village. In those days there were two classes of Gild (an early spelling of Guild) - craft and social, both with a religious connection. Craft gilds were formed by members of a certain craft or trade and grew to be called livery companies and to have significant influence in The City of London. The gild in this village was a social gild, a kind of sick and burial club or benefit society. Most villages in the land had at least one of these Gilds, with over 350 in Cambridgeshire. It is reported that this was the centre of village life – a place to meet for supper on feast days, a source of pleasure to mind and body, where dues were paid on the appointed days and the dole was received by those no longer able to work. With its funds the Gild would purchase cattle and other animals, which it would then rent to the local smallholders along with the land if required. However as they grew to constitute independent centres of community life, governments tended to dislike them.

In 1545 and in 1547 Acts of Parliament were passed confiscating the property of the Social Gilds, to replenish the Exchequer and fill courtiers' pockets. This of course was not popular and villagers took any steps to hide the Gild's possessions. It took about 40 years to gather up all the Gild property with at least 12 commissions being sent to Cambridgeshire in Elizabeth I's reign to enquire about 'concealed lands'. The majority of the Craft Gilds escaped confiscation, as the King could not afford to offend those who now had wealth and influence in the City of London. A fine example of a Gildhall survives at Lavenham but most were pulled down. The one at Horseheath was demolished in 1570 by Sir Giles Alington, with the land sold. Most records of Gildhall sites, possessions and property were carefully destroyed at that time.

## The second Hall

The Guildhall, also called The Parish Room and The Village Hall, was built by the parish at the end of the 1800's and funded by public subscription. It was sited on the first bend in West Wickham Road, next to Springfield Cottages roughly where Bridge House stands now (2011) on a piece of land owned by the Church. A library was added in about 1910. Apparently there was an understanding that the land would be transferred to Hall trustees but it wasn't and the error was not uncovered till the 1930's, yet still no transfer was made. It was the centre for village meetings, socials and parties. Homecoming receptions were held there at the end of the Second World War for returning service men and women. In the 1950's and maybe before it was used as the visiting dentist's surgery.



*Christine Crissall outside the Guildhall in about 1962*

In 1969 the Hall was declared unsafe for use and there was request to use the school for various events – youth club, etc. but this was turned down as not feasible. A Village Hall Action Committee was formed with Robert Taylor of Cardinal's Green as Chairman. Plans were drawn up to build on a kitchen and lavatories with future extensions to include a stage area so the stage could be moved out of the Hall and a store. The Village Hall Trustees at this time were the Rector and the Churchwardens. In 1970 the incumbent, Rev. Gordon Jackson

wrote, 'One of the reasons why there is such little support for the Village Hall is the fact that there is a strong feeling in the village that the Hall was built by public subscription and should belong to the village and not to the church. It seems right and proper that we should now try to put matters right.' In spite of this the land was still not transferred and the Guildhall was finally demolished in early 1977 - (*see report in Press cuttings section*). The land was eventually sold by the Diocese as a building plot in the 1990's.

### The third Hall

The decision to close Horseheath School was announced in 1983 and the group of villagers who had run a campaign to try to stop it closing switched to see if they could find ways to raise money and purchase the school for use as a Village Hall. A working party was appointed at a public meeting chaired by Rev. Vivian Ryder towards the end of 1983 and the members were: Peter Wilton (Chairman), Sue Flanagan (Vice-chairman), Stephanie Thompson (Secretary), John Loftus (Treasurer), Wendy Cottage, Christine Newman and Margaret Wordsworth. Over the next 15 months or so it completed negotiations with the Church Of England for the purchase of the property for £25,000; sought loans from The Parish Council, the District Council and the County Council; registered 'Horseheath Village Community Association' as a charity to own the Hall; agreed a constitution to run it and arranged various fund-raising events. The School closed in July 1984 and working parties were formed to install a bar, a kitchen and adult size lavatories, remove the huge 4 door partition and lay a new floor in the Hall, with playground equipment outside. Some of the key voluntary workers were Keith Cottage, Rob Crissall, John Greenwood (*below left*), John Loftus, John Pennycook, Bob Perry and Bernie Smith (*below middle*) plus plenty of helpers, for instance refurbishing the swimming pool (*below right*).



The first Village Hall committee elected in April 1985: Tom Harrison (Treasurer), Nanette Crissall, Peter Wilton (Chairman), Margaret Wordsworth, Keith Cottage (Vice-chairman), Paul Banks (Secretary)



The Rev. Vivian Ryder had been appointed President of the Association by the Working Party and he again chaired the meeting in April 1985 when the first Village Hall committee was elected. Subsequently, under the terms of the constitution, members representing organisations using the Hall joined the committee – Joan Johnson for the Parish Council, Cherry Fraser for the A604 Club and Christine Newman for the Brownies.

The Hall was officially opened in 1986 by the TV presenter Wincey Willis, who shared the opening honours with Nancy Thoday from Abington, who taught at the school for many years. (see report in Press cuttings section).



above left: 1987 'Saturday Club' football, above right: 1987 Village Fete, below left: 1987 Harvest Supper, below right: 1988 sponsored Cricket Match, one of many fundraisers.

There was an above-ground swimming pool at the back of the Hall, installed by 'The Friends of the School' in about 1969 and removed in 1989. Its area can still be seen by a change in slab colour.

A Street party was held in 2000, organised by a committee chaired by Peter Fairey and opened by Sir Arthur Marshall. The road at the front of the Hall was closed to enable chairs and tables to be laid for tea in the street. There were races and a fancy dress competition.



There are many pictures of the party in the Photograph albums of Horseheath Village Archives.

Some playground equipment was installed in the 1980's with significant improvement including matting installed in 2001 following fundraising by a committee led by Richard Martin. In 2009 a large grant of £35, 000 was obtained by a committee chaired by Adrienne Powell to revamp the playground including several pieces of new equipment.

*Stuart Miller, 2011*

Acknowledgements:

'The Village Gilds of Cambridgeshire' by W.M.Palmer, 1904, part of 'Transactions of the Cambridgeshire and Huntingdonshire Archaeological Society', Vol 1

With thanks to Peter Wilton and to Sally Boyles, Nanette Crissall and Nita Miller for the photographs.

## THE VILLAGE GILDS OF CAMBRIDGESHIRE.

Of all the unjust and arbitrary measures taken by the second and third Tudor sovereigns to replenish the Exchequer and fill the pockets of their greedy courtiers, the Acts of Parliament which confiscated the property of the gilds were the most iniquitous. The gilds were the benefit societies of the middle ages, and it was to their suppression, as much as to the suppression of the monasteries, that the increase of poverty in the reign of Elizabeth was due. There were two classes of gilds, each more or less of a religious character. Those belonging to the first class are usually called craft gilds, because they were formed by a combination of the members of a certain craft or trade, such as skinnners, pewterers, woolcombers. The majority of this class escaped confiscation, the alleged reason being that they had all the wealth and influence of the City of London behind them, and needy Kings could not afford to offend the men with the purse strings. The other class, usually called the social gilds, were a kind of sick and burial club, with a strongly religious basis. These existed in their thousands throughout the land, almost every village having one or more. In the towns there were many, in Cambridge there were over thirty.\* A volume by Miss Mary Bateson, dealing with these has lately been published.† The object of the present paper is to collect some of the records which exist concerning Cambridgeshire village gilds.

The first thing which strikes one, after reading the evidence as to the hold they had on the life of the people, is a feeling of wonder that it should have been possible to carry out the act of suppression. It is easy to understand that the common people looked on at the spoliation of the monasteries with indifference. It meant to them

only a change of landlord, and perhaps a chance of buying small pieces of land. They would not know at the time, that the lay landlord would be a much harder man to deal with than the religious man, and so they accepted the change with complaisance. Also, with regard to the lamp and obit lands, which included strips of land in the open field, closes of pasture, osier holts, windmills and other property, which had been bequeathed by their pious ancestors to provide masses and candles before the altar or image of their favourite saint. The confiscation of these deprived only one man, the parish priest or the chantry chaplain, of income. Certainly, the people lost all the benefits to be derived from the masses for which the rents were paid, but in the tempest of irreligion which was sweeping over the land, it might seem to the people that it did not matter much about masses, and perhaps it was best that the fat chantry priest should be made to work for his living!\* But with the gildhalls, the feeling must have been very different, for they were the centre of village life. They were a source of pleasure to mind and body, and of profit to the pocket. For here folk met at supper on feast days, here they paid their offerings at the appointed time and received their weekly dole when they were no longer able to work. Here they came to pay for the hire of the cows which had brought them in much profit in the way of calves and milk during the past season. And here the brethren and sistren assembled on saints' days and funerals, and formed a procession to the church. Perhaps also the gild chaplain, if the gild was rich enough to maintain one, lived in the room over the gildhall. He was always willing and able to help them in any matter connected with reading and writing, of which hard accomplishments the ordinary villager knew nothing. And now they were told that Parliament† had

\* In a survey of a chantry at Wimpole, Cambs., several of the witnesses speak of "a great priest dwelling in a house not far from Mr. Chicheley at Wimpole, called great Sir Robert."—*Excheq. Dep. by Com.* 29—30 *Eliz. Mich. No. 2.*

† Sir Edward North, and James Dyer, Esquire, were the members for Cambridgeshire in 1546, when the acts suppressing gilds were passed.

\* Atkinson, *Cambridge described and illustrated.*  
† *C.A.S. Soc. Publications, No. 39.*



passed a law which would make them give up their gild-halls with all things belonging thereto, tables, chairs, brass pots, fireirons, wooden trenchers and spoons, gild stock-cows, corn and money, as well as the lamp and rood lands, and all this because these things were said to make them superstitious and friends of the Pope of Rome. It was hard to believe, and yet down came the commissioners from his majesty's exchequer, and made inquiry into the value of these things, and wrote it all down in a book. But the simple villagers often proved themselves more than a match for the clerks of the exchequer, and effectually concealed much from their knowledge, both gild halls, brass pots and rood lands. Only for a time, however. The exchequer had long ears, and commission after commission was sent down into the country, until every gild cottage, close of pasture, and platter had been licked up by the insatiable office at Westminster. The process of confiscation took some years. The act was passed in 1547 and at least as late as 1585, the search was still going on. During the reign of Elizabeth at least twelve commissions were specially sent down into Cambridgeshire to enquire about 'concealed lands.' The work was difficult, because in order to get information a local person had to turn informer, and it was the local people who were the losers. The informations read strangely nowadays. The Anglo-Saxon chronicle complains about the exactness with which the Domesday survey was carried out, how every yard land, every ox and pig, were written down, and speaks of it as being shameful in a King. To us there seems no injustice in this—certainly no injustice to the lower orders, the hardships, if any, fell on the rich alone. Our feeling with regard to the great survey is admiration, admiration for the mind which could conceive and carry out such a design. But of some of these

\* There were two Acts. (1.) 37 Hen. viii. c. 4. by which all possessions of brotherhoods, fraternities, gilds, chantries, free chapels, &c., were vested in the crown, and the King empowered to send out commissioners to seize their property, that they might be used and exercised to more godly and virtuous purposes! (2.) 1 Edward vi. c. 14., which repealed the provisions of the former Act.

Elizabethan surveys, we can only speak with contempt: one of them states that 'in the parish of Great Wilbraham in the Co. of Cambs. is one brasse panne formerly belonging to the guild which used to be held there, but now in the possession of Richard Raude and concealed from her Majesty the Queen. The value is 20<sup>l.</sup>\* This is truly shameful, and there are other cases almost as bad as this.†

The earliest information we have concerning the customs of village gilds is contained in the gild certificates of Richard the Second. In the year 1388, on the first day of November, a writ was sent to the sheriff of each County‡ to make proclamation in all the cities, boroughs, and market towns of his bailiwick, ordering the custodians, aldermen, or chief men of gilds to return forthwith into chancery a certificate properly authenticated, containing an account of the gilds, giving the origin, by whom and when founded, the objects for which they existed, the nature of the meetings and the amount of property held in lands and goods. These returns, were to be sent to Westminster by the second of February following, on pain of forfeiture of all lands and goods. Miss Bateson§ thinks the primary purpose for which these returns were required, was to discover how far it might be necessary to check the passing of property into the 'dead hand' of the saints who were

\* See appendix for the whole inquisition.

† On February 19th, 13 Elizabeth "They also certify that there is one house or tenement called the yeldhall with close of land adjoining, containing about a rood in Ikington appointed for maintaining a gild commonly called a guyld, every year for ever, which tenement is now or was lately in the occupation of the guardians of the parish church of Ikington, and ought to be in the Queen's hands by reason of the act of Parliament passed 1 Edward vi. The yeldhall and close are worth 6d. a year clear."—*Exchequer Special commission*, 2885. And in 1561 a jury at Newmarket stated that in Chippenham was one tenement called the Guyldhall and one acre and a half of land, of the annual value of 8d., lately belonging to the gilde of Chippenham, and in the parish of St. Mary, Ely, was a ruined tenement called the guyldhall, of the annual value of 4d.—*Excheq. Sp. Com.*, 2907.

‡ See Toulmin Smith's *English Gilds* p. 127-9. Sir Wm. Cheney of Long Stanton was then sheriff of Cambs. and Hunts., and must have had a busy time during this month of November going round to all the market towns to make proclamation, for they were more numerous than they are now—Jinton, Foulmer, Clopton, and many others.

§ *Cambridge Gild Records*, p. xxviii.

DATE  
NOT TO BE COPIED  
WITHOUT PERMISSION  
RECORD OFFICE  
CAMBRIDGESHIRE

the patrons of these communities, and quotes the statute 15 Richard II, c. 5, which brought gilds under the statute *de religiosis*. But when we consider the paltry amount of property possessed by the Cambridgeshire village gilds, it does not seem likely that this explanation applies to them. Another reason is suggested by a passage in the King's proclamation asking for information 'as to the manner and form of the oaths, gatherings, feasts, and general meetings of the brethren and sisteren.' Is it not possible that one of the objects of these returns was to find out if any illegal meetings were held under shelter of the gilds? Only seven years previously, the country had been convulsed by the peasant insurrection,\* and according to evidence given at the trials of the rebels, the minds of the peasantry had been inflamed by doctrines promulgated at secret meetings. Many gilds were started at the beginning of King Richard's reign, and it seems very probable that the authorities were looking at them as possible sources of social unrest.

In the village certificates there are only five references to this particular clause in the proclamation. The gild of the Resurrection at Chesterton stated that 'the brothers and sisters held no gatherings (*congregationes*) or general meetings (*assemblies*) except for hearing the account of the alderman and custodians, or when the alderman called several of the brethren before him to have better counsel on the matter, when anyone wished to enter the brotherhood.' The gild of St. Catherine at the same place made a similar return. The Mary gild there, stated that 'they do not hold drinkings, or general meetings or assemblies, nor make allegiances, nor take oaths, save that a brother on entry promises to give his portion towards keeping up the lights, etc., and that once a year they assemble in any honest place and hear the account of the custos.'† At Bottisham and Swaffham Bulbeck, the Trinity and Holy Cross gilds state that

\* Cambridgeshire was particularly affected. See Cooper's *Annals*, Vol. I, p. 120—4. *East Anglian*, Vol. vi. p. 81, 97, &c., and Powell *The Rising in East Anglia in 1381*. The Parliament which ordered the return of the gild certificates was held at Cambridge.

† Chaucery Gild Certificate, 13, 14, 15.

neither custos nor ordinary member is in anyway bound by oath or fealty.\*

Whether these gilds flourished more in the Eastern Counties than elsewhere or not, a great number of certificates are now in existence from that part than from any other. Cambridgeshire has fifty-eight of which eight belong to the town of Cambridge, eleven to the City of Ely, and six to Wisbech, leaving thirty-three for small towns and villages. These certificates are of varying interest, according to the details given of the customs of the gilds. They are mostly written in Latin, but some are in French, and one or two in a mixture of both languages. Several different forms will be given in the appendix to this paper. Many gild certificates, including some for the town of Cambridge, are in *English Gilds* collected by Toulmin Smith for E.E.T.S. in 1870, and a volume called *Cambridge Gild Records* has been ably edited by Miss Mary Bateson for the Cambridge Antiquarian Society. But none of the Certificates from which my notes have been taken have been printed, except those of Bottisham (in Hailstone's *History*) and March (*Fenland N. & Q.*, vol v., p. 206.)

It must be borne in mind that the remarks in this section refer only to gilds as they existed in the time of Richard II. No village gild customs of a later date, with the exception of those of Dullingham, have come to my notice, and that exception will be specially dealt with.

It is hardly probable that all the certificates which were returned into Chancery in 1389 have been preserved. The condition of some of these existing, Littleport, for instance, which is hardly legible, show what risks of destruction they have gone through. Hence it is not wise to make positive statements concerning the origin of village gilds in Cambridgeshire, but the information we possess points to these being of a purely religious origin. In the majority of cases their object was either to keep up lights

\* *Ibidem*, Nos. 3 and 33. These two certificates were drawn up by the same scribe. A full translation of the Bottisham certificate is given in the supplement to Hailstone's "*History of Bottisham*."



before an altar or image, or to repair the parish church and furniture. In a few, the burial of the dead was provided for and masses said for their souls, and in six only was there any provision made for relief of the sick or infirm. The gilds of the simplest character were those of Sawston, Pamphsford\* and Whittlesford. These were evidently drawn up by the same scribe, as the wording is alike in each, and even the spelling is almost identical. They simply state that some bushels of barley had been put out to increase in order to provide funds for the repair of the church roof, which could not be done without the aid of the gild. They therefore pray to God that their purpose be not disturbed. Usually the date and name of the gild is given first, then the object for which it was founded, with the names of the founders. The ordinances and customs follow, and these are the most important part. A valuation of the lands, goods, and chattels finishes it. It will be convenient to consider these certificates together under various headings.

1. *Date of foundation.* The earliest gilds were in the towns. The gild of St. Mary at Cambridge was probably founded between 1279 and 1284†. At Ely the gild of St. Etheldreda in the church of Holy Trinity was founded 'more than 100 years' before the date of the certificate, and the gild of St. Peter in the same church more than eighty years before. The earliest dated village gild is that of the Resurrection at Chesterton, 1336. Other dates are Wisbech (St. Peter's), 1327.‡ Chatteris (Holy Trinity), 1334, Haslingfield (Assumption), 1343, Strettham (St. Mary), 1344, (Corpus Christi) 1350, Stowe cum Quy (St. John Baptist), 1358, Chesterton (St. Katherine and St. Mary), 1377, Tydd St. Giles (Holy Cross), and Leverington (Assumption), 1386. The four gilds at Littleport were started in 1377(two), 1380 and 1382. The gild of St. Mary at Tydd St. Giles was founded "immediately after the first pestilence," i.e. in 1349. The gild at Swaffham Bulbeck and Elm were

\*See Appendix.

† Cambridge Gild Records, p. viij.

‡ The other three gilds here only date from Richard II.

founded 'beyond the memory of man,' and at March 'of old.' These expressions may mean little or much. They may mean that the living inhabitants were ignorant of the date of origin, or that the gild might have been ancient. For it is a well known fact that gilds existed in England before the Norman conquest. The laws of a gild of Thanes at Cambridge about A.D. 1050 are printed in Cooper's *Annals* I. 15. These laws are similar to the ordinances of the Chancery Gild Certificates: an oath on entry, a reeve or warden, burial at the expense of the gild, followed by a feast and almsgiving, and a common fine for breaking rules. The laws of gilds at Exeter, Woodbury and Abbotsbury before the Conquest have also survived. And if we go further back and further afield we find a gild existing at Lanuvium in Italy, A.D. 133, the rules of which might very well have served as a pattern for those shown in the Chancery Gild Certificates of Richard II. I do not mean to suggest that the village gilds are a survival of the Roman occupation of Britain, but only to point out that they were not an invention of the fourteenth century.

2. *Origin of the gilds.* The object of St. Katherine's gild at Chesterton, was to repair a certain altar of St. Katherine in Chesterton church, which in 1377 had become old and unworthy, and the roof above it ruinous. The gild of Holy Trinity, Bottisham, was founded to the honour of the Trinity and for keeping a wax light burning before the image of the Trinity on feast days, for the repair of the church, for the renovation of vestments, books and other ornaments in it, and for the aid of the poor and feeble of the village. The gild of St. Katherine at Elm was founded for keeping a light before the image of that saint. The gild of the Assumption at Haslingfield was founded about 1343 by Wm. Sterne John Bonde and others, to provide a chaplain to say divine service in chapel newly built in Haslingfield.\* The gild of the Assumption at Leverington was begun on Wednesday in the feast of St. Mary 1380, by William Iwerard

\* This was the chapel of our lady of White Hill. See Conybeare, *History of Cambs.*, p. 144.

gildhall to be holden as in any other place within the said town, and after eny said dener and feist is endet, the said spit and cobbonds to be delivered into the said gildhall unto the custodie of the wardens having all other stuff of the same hall in their keeping, there to remain for evermore, and the said wardens to make answer, and account to the parishioners of both the said churches every yere at such tyme as they make their account of all other stuff remayning within the said gildhall.' In Fulbourn *All Saints*, the gilds were St. John the Baptist, Our Lady, The Assumption; in Fulbourn *St. Vigors*, St. Vigors, and St. Stephen.

One village had two gildhalls. The small village of Wimblington had two gilds, Holy Trinity and Purification, and two halls, one of which was sold in 1570 to Edward Forth, and another in 1571 to Richard Hill.

The gildhall although built by the town was usually on land belonging to the lord of the manor. Thus at Landbeach in 1527 we read 'M<sup>d</sup> that the towne house was bylded at the common charge of the township.' In 1530 'it was agreed between both ye lords of the towne that from hence the commoners of this town shall pay to either lord 1d. a year for the gild hall.' The gild hall at Melbourn stood on land belonging to the Bury manor.

Some gildhalls were pulled down after their suppression. Thus in 1570 at Horseheath was sold the land on which the gildhall formerly stood and which had lately been pulled down and carried away by Sir Giles Alington, Kt. and at March there was sold a tenement called the gildhall and an acre of land on which was built the house of the gild of St. Wyndred.\*

During the reign of Queen Mary there was probably a revival of interest in gilds as there was in monasticism. The latest reference to a village gild I have met with belongs to the last year of her reign. Sir Phillip Parys, Kt. of Little Linton, Cambs. by his will made 10 June, 1557<sup>7</sup>/<sub>8</sub> directed a mass of Requiem to be sung for him on Monday after Candlemas day, in Linton church for

\* Patent Roll 13 Elizabeth part 4. A swan mark belonging to this gild was sold at the same time.

AMERICAN SOCIETY  
RECORD OFFICES  
NOT TO BE COPIED  
WITHOUT PERMISSION  
DATE 04-03-09  
REV. TRANS. CAMBS & HUNTS  
ARCH SOC VOL 1 C. 08.  
1904 ELY

		St. Stephen	1507	The Will of John Chiltern. <i>Cole</i> 173. 1 <i>ut supra.</i>
		Our Lady	1521	The Will of Richard Willesmere. <i>Cole</i> 157.
Haslingfield,	<i>All Saints</i>	Assumption	1343	Gild Certificate 24. { In 1521 Wm. Atkyn left 5s. to the Gild of the Assump- tion, to the annorning of the altars of St. Nicholas & St. John 32s., to the altar of St. James 6s. 8d. <i>Cole.</i> { In 1527 Richard Hoyd the residue of his estate to the aldermau & bailiff of Trinity Gild. <i>Cole.</i>
		Holy Trinity	1498	The Will of Robert Whytt, <i>B.C.</i> , D 129.
		Nativity B.V.M.	1493	The Will of Robert Cokesale, <i>B.C.</i> , D 81.

Hatley St. George, ? *St. George*

Hauxton,	<i>St. Edmund</i>	St. Katherine	1529	The Will of John Newman. <i>Cole</i> 212. Land sold to Chester <i>Pat. Roll 3 Edw. vj. pt. 7.</i>
Hildersham,	<i>Holy Trinity</i>	Assumption	1484	The Will of Wm. Stalworth, <i>B.C.</i> , C 58. In 1524 Joan Ouye left to the gild a table and a form. <i>Cole.</i>
Hinton,	<i>St. Andrew</i>	Holy Triuity	1489	(A Will.) <i>B.C.</i> , D 51
		Holy Rood	1529	The Will of Wm. Ashbie, <i>A.R.</i> , I 14
		St. Katherine	1529	do.
		another, name unknown.	1521	The Will of John Killingworth, <i>A.R.C.</i> 48. 'To iche of the fourre gilds 12d.'
Hinxton,	<i>St. Mary</i>	Our Lady	1518	The Will of Thomas Swan. <i>Cole</i> 126.
Histon,	<i>St. Andrew</i>	St. Katherine	1520	The Will of Margaret Raven. <i>Cole</i> 144. Gildhall sold to Vena- bles. <i>Patent Roll 3</i> <i>Edw. vj. pt. 9.</i>
		Purification	1520	do.
		All Saints	1528	The Will of Giles Taylor. <i>Cole</i> 203.
Histon,	<i>St. Etheldreda</i>	St. Katherine	1519	The Will of Thomas Raynes of Histon St. Etheldreda. <i>Cole</i> 130.
Horningsea,	<i>St. Peter</i>	St. Peter	1531	<i>Cole</i> , quoted in Clay's <i>History</i> .
		Our Lady	1529	do.
Horseheath,	<i>All Saints</i>	? Our Lady *	1527	The Will of Robert Knoke. <i>Cole</i> 193. The site of the Gildhall which had been pulled down by Sir Giles Alington, sold to Hill and Don. <i>Pat. 13 Eliz. pt. 4.</i>
Ickleton,	<i>Mary Magdalene</i>	Corpus Christi	1520	The Will of Thomas Aspedon. <i>Cole</i> 136. Gildhall and land sold to Marshe & Grenham <i>Pat. Roll 14 Eliz. pts.</i> 2 & 4.
		Trinity		<i>Btomefield MS.</i>
Impington,	<i>St. Andrew</i>	Resurrection	1524	The Will of Alice Scott. <i>Cole</i> 180.

\*1512. John Pettit "To the keeping of a light in the chappyll of our blessed lady in Horseheath church for evermore a  
cow." *B.C.* E75. 1518. Wm. Sloo to the keeping of a light before the image of the Blessed Mary, to begin that light at  
Michaelmas A.D. 1520.

1967

---

THE FRIENDS OF HORSEHEATH SCHOOL

2nd ANNUAL GARDEN SHOW & FETE  
(Proceeds to School Playing Field funds)

AT

Horseheath C of E Primary School

ON

Saturday, 9th September, 1967 at 2.30 p.m.

SCHEDULE

\* \* \*

ADMISSION

ADULTS 6d.

CHILDREN 3d.

REFRESHMENTS & ENTERTAINMENTS AT MODERATE PRICES

NOTE Your attention is drawn to the specification  
for each class.



THE FRIENDS OF HORSEHEATH SCHOOL

**5<sup>th</sup> ANNUAL GARDEN  
SHOW AND FETE**

at

**Horseheath C. of E. Primary School**

**Saturday, 29th August, 1970**

at 2.30 p.m.

**SCHEDULE**

Admission  
Adults 6d Children 3d

Refreshments and Entertainments at  
moderate prices

Proceeds to School funds

## PRIZES

(Subject to a minimum of 6 entries per class)

**MANAGERS' OPEN CUP.** Awarded and held for one year by the exhibitor who obtains the highest number of points.

**VILLAGE CUP.** Awarded and held for one year by the exhibitor from Horseheath obtaining the highest number of points, or to the second highest if the OPEN CUP is won by an exhibitor from this village.

Points given on a 3-2-1 basis.

1st 2/6d and prize card

2nd Prize card

3rd Prize card

## CLASSES

### FLORAL ARRANGEMENT

- 1 A floral arrangement
- 2 Children's floral arrangement — under 9 years
- 3 Children's floral arrangement — over 9 years

### FLORAL

- 4 3 Roses, one each of distinct varieties named
- 5 1 Rose
- 6 One spray floribunda
- 7 Pot plant, for foliage
- 8 Pot plant, for flowering
- 9 3 double Dahlias
- 10 3 single Dahlias
- 11 4 assorted Gladioli
- 12 3 Chrysanthemums
- 13 A collection of Annual flowers
- 14 6 Sweet Peas

### FRUIT AND VEGETABLES

- 15 3 Tomatoes
- 16 6 Shallots
- 17 6 Onions
- 18 The heaviest onion, not more than 2in of tops
- 19 3 round Potatoes
- 20 3 kidney Potatoes
- 21 6 pods Dwarf Beans

- 22 6 pods Runner Beans
- 23 Green Cabbage, untrimmed
- 24 Bunch of 6 short Carrots with tops
- 25 Bunch of 6 long Carrots with tops
- 26 Bunch of 3 Red Beet with tops
- 27 Largest vegetable Marrow
- 28 Any other vegetable
- 29 4 eating Apples. Home grown
- 30 4 cooking Apples. Home grown

## PRESERVES AND BAKERY

- 31 1lb jar of Blackcurrant jam
- 32 1lb jar of Marmalade
- 33 Jar of pickles
- 34 Victoria Sponge. Using basic recipe 2 eggs and their weight in fat flour and sugar.
- 35 6 Scones
- 36 Semi-rich cake from recipe attached

## HOME MADE WINES

- 37 1 bottle of wine

## HANDICRAFTS

(Exhibits to have been made since September 1969)

- 38 Adults Section
- 39 Children's Section — under 8 years
- 40 Children's Section — under 12 years
- 41 Children's Section — 12/16 years

## CHILDREN'S SECTION

(Age of entrant to be stated)

- 42 A drawing or painting (not traced) of entrant's own choice under 8 years
- 43 A drawing or painting (not traced) of entrant's own choice under 12 years
- 44 A drawing or painting (not traced) of entrant's own choice 12/16 years
- 45 Miniature garden, not more than 12in x 12in

There will also be a decorated cycle Competition, and an open Fancy Dress Competition. Ages under 7 years and over 7 years.

### Semi-rich Cake Recipe

8 ozs plain flour  
1½ level teaspoons baking powder  
pinch salt  
5 ozs margarine  
5 ozs caster sugar  
2 eggs  
8 ozs mixed fruit and peel  
7 tablespoons milk

Prepare a seven inch cake tin. Sieve the flour and salt and baking powder. Cream fat and sugar. Beat each egg separately, add half the sieved flour then half the prepared fruit, fold in gently and thoroughly, then fold in the remainder of flour, fruit and milk.

Put into the prepared tin and bake middle shelf of very moderate oven -- Mark 3 or 335 °F 1¼-2 hours.

---

### RULES

- 1 Entry fee 6d per exhibit
- 2 All entries must be paid for at time of entry and staged by 12.30 p.m.
- 3 The school will be open for the receipt of exhibits from 7.30 p.m. to 8.30 p.m. on Friday, 28th August, and from 10 a.m. until 12.30 p.m. on the day of the show
- 4 Entries will be sold after the show unless otherwise specified by the entrant
- 5 All exhibits must be grown or produced by exhibitors on their own gardens or allotments. An exception to this rule is pot plants.

THE FRIENDS OF HORSEHEATH SCHOOL PRESENT THE

# GRAND 1981 GARDEN SHOW & FETE



SCHEDULE FOR  
16<sup>TH</sup> ANNUAL GARDEN SHOW



TO BE OPENED BY

MR BRYAN ELLICOTT

AT 2.30 PM ON SATURDAY 5<sup>TH</sup> SEPTEMBER  
AT HORSEHEATH SCHOOL

EXHIBIT ROOM OPENS AT 3.00 PM

TEAS, SIDE SHOWS ETC

EVERYBODY IS WELCOME TO COME ALONG  
AND JOIN IN THE FUN



Governors of Horseheath C. of E. Primary  
School

17<sup>th</sup> Annual

G  
A S  
R H  
D O  
E W  
N  
Fete

Saturday,

11<sup>th</sup> September, 1982

to be opened at

2-30 p.m.  
by

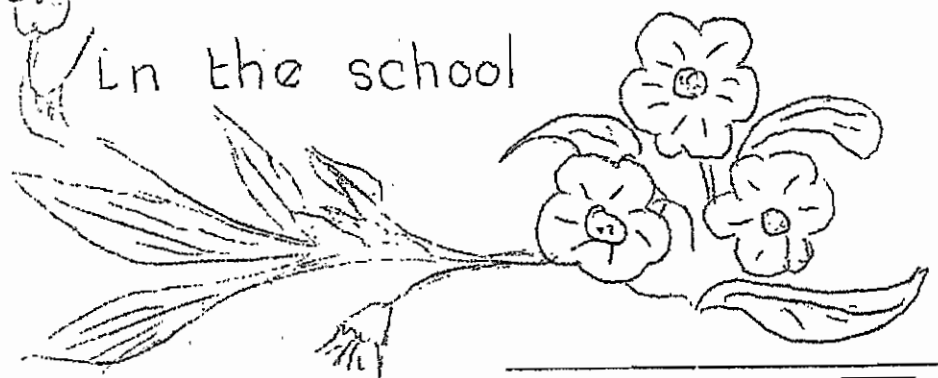
Rev. V.C. Ryder, O.B.E.

Exhibit Room open  
at 3 p.m.

and Teas, Raffle, Stalls, etc.

EVERYONE WELCOME

In the school



1983

Governors and Friends of Horseheath School.

18<sup>th</sup> Annual



# GARDEN SHOW

and Fete

in the school on

Saturday, 3<sup>rd</sup> September.

to be opened by

Mr. L. S. Barley

at 2-30pm

Exhibit Room open at 3 p.m

Teas - raffle - stalls - sideshows

EVERYONE WELCOME !!

1984

19<sup>th</sup> Horseheath  
**GARDEN SHOW**  
and **FETE**

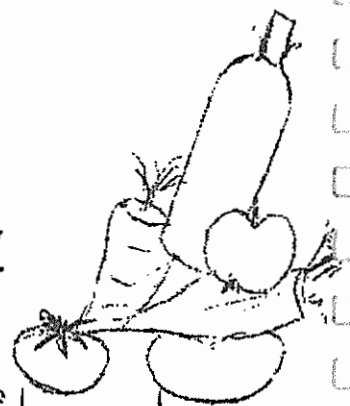
Saturday, 1<sup>st</sup> September  
2-30pm

To be opened by  
Mrs. C. Ogilvy  
in the school.

Stalls, - raffle - sideshows -  
Refreshments  
etc

EVERYONE WELCOME

Proceeds to Village Hall and Church.



20th

1985

# NORSEHAMPTON

Garden Show  
and Fête

Saturday 31st August

2.00 p.m.

To be opened by

Terry Bear

(our County Councillor)

Many Stalls, Raffle, Afternoon Tea

Barbecue to follow

Everyone Welcome

Proceeds to the Village Hall

Donor List

Children's  
Fancy Dress



# 23<sup>rd</sup> HORSEHEATH



## Garden Show and Fete

Saturday 10th September

2.30pm.

Stalls, Raffle, Afternoon tea, Bar open,  
Everyone Welcome

1988

# CHANCE OF A WIN **LIFETIME** FREE



Come to the Garden Show and Fete and claim your free raffle ticket to win an aeroplane ride for 2. Then buy more tickets to increase your chances of winning!

The trip will last about 45 minutes and be arranged at a time convenient to both you and the pilot, Tony Denchfield, to whom we are very much indebted.

Come and win a dream prize.

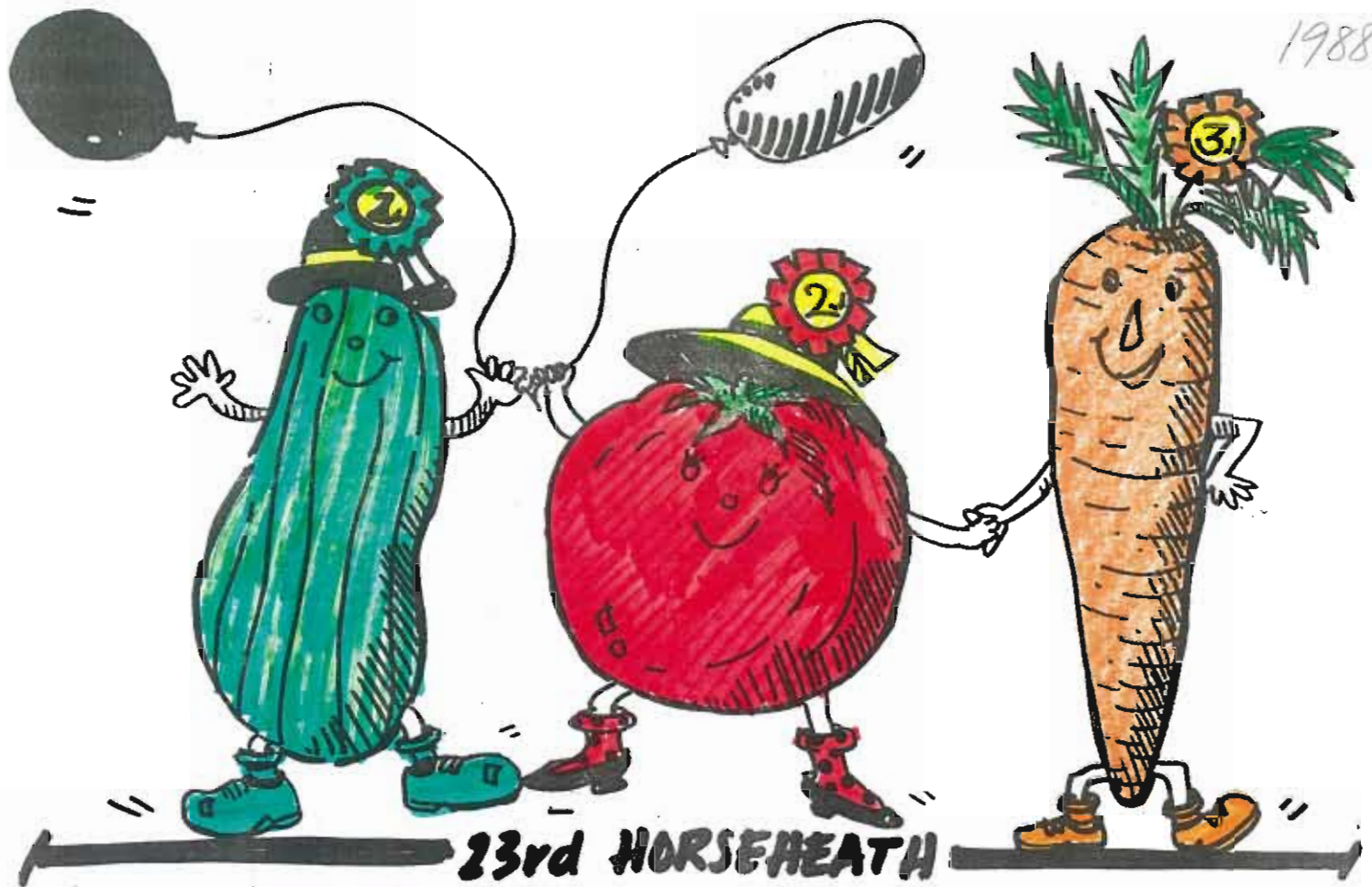
## HORSEHEATH GARDEN SHOW AND FETE

Saturday 10th September  
at 2.30 pm



Children under 18 must be accompanied by an adult.

1988



23rd HORSEHEATH

# GARDEN SHOW & FETE

SATURDAY 10th SEPTEMBER at 2.30pm

Stalls • Raffle • Bar • Afternoon Tea &

**WIN**

AN AEROPLANE RIDE FOR 2

G A R D E N   S H O W   A N D   F E T E

H E L D   O N

9th September 1989

	<u>INCOME</u>	<u>OUTGOINGS</u>
	£	£
SHOW AND AUCTION	79.40	
GRAND RAFFLE	43.00	
CAKE RAFFLE	29.20	
EAT-A-CRACKER	4.00	
BEAN BAGS	8.10	
CAKE STALL	33.51	
GUESS WEIGHT OF KITTENS	5.55	
PLANT STALL	12.30	
BOTTLE STALL	35.80	
TREASURE HUNT	5.20	
TREASURE HUNT MAP	2.00	
HAM RAFFLE	27.00	
WHISKY GALORE	36.10	
BOWLING	26.10	
TRACTOR RIDES	14.25	
ROULETTE	24.60	
FACE PAINTING	3.45	
PONY RIDES	5.60	
BAR-B-Q	51.50	
TEAS	25.60	
	-----	
	£472.26	
BAR TAKINGS £115 APPROX PROFIT	40.24	
RAFFLE BOOKS		2.50
	-----	-----
	£512.50	£2.50
	=====	=====

PROFIT = £510



# 25th HORSEHEATH GARDEN SHOW & FETE



**SAT. AUG. 18th 1990**

STALLS • BAR • RAFFLE  
• AFTERNOON TEAS •

# HORSEHEATH



1991



26<sup>th</sup> GARDEN SHOW & FETE

SAT. AUGUST 3rd 2.30pm.

! COME AS A CLOWN !

MANY STALLS, RAFFLE, TOMBOLA  
CREAM TEAS, BOUNCY CASTLE

PUNCH AND JUDY  
AT THE VILLAGE HALL

EVERYONE WELCOME



1992



## GARDEN SHOW SCHEDULE

***HORSEHEATH***

***MEDIAEVAL FETE & GARDEN SHOW***

*Sunday August 30th 1.30pm*

*Many stalls, games, raffle, tombola,  
teas, Bar-B-Q, Bouncy Castle, Punch and Judy.*

*at the Village Hall*

***EVERYONE WELCOME***



# HORSEHEATH HEYDAY KLONDYKE FAYRE + GARDEN SHOW

SUNDAY AUGUST 29<sup>th</sup> 2pm  
HORSEHEATH VILLAGE HALL

- \* HOG ROAST BARBECUE \*
- \* BYGONES \*
- \* BOUNCY CASTLE \*
- \* JAKES MINE TRAIN \*
- \* TIP THE MAIDEN OUT OF BED \*

- \* 50p ENTRY INCLUDES REFRESHMENTS
- \* CHILDREN & SENIOR CITIZENS FREE
- \* BAR OPEN





1994

# HORSEHEATH ANNUAL HEYDAY & GARDEN SHOW

# HEYDAY FRANÇAISE

★★★ WIN £50 - Toss the Bale of Hay : WIN £30 - Best Rose ★★★

- ☺ Sideshows, Games
- ☺ Competitions
- ☺ Ride on 'Le Shuttle'
- ☺ French Style Entertainment
- ☺ Barbecue & Bar

Bank Holiday  
Sunday 28th August  
at the Village Hall  
Horseheath

Open from  
1.30pm  
Official opening  
2.00pm  
Garden Show judging  
2.30pm  
(Rose entries by 2.30pm)

Come back in the evening for Wine, Cheese, Dancing and Music by Dave Martin

Garden Show Entry Forms from Horseheath Post Office and The Village Hall, Haverhill Road, Horseheath

1994



# 33rd Horseheath Heyday Garden Show Schedule

Sunday 30th August 1998  
viewing open 2.30 pm

## RULES

1. Entry fee of 30p per entry to be paid at the time of entry (children and OAP's free).
2. All exhibits must be grown or produced by the exhibitors on their own gardens or allotments except for pot plants which should have been in their possession for the three months prior to the show.
3. NO ONE MAY ENTER MORE THAN ONE EXHIBIT PER (ADULT) CLASS.
4. NO COMPETITOR MAY WIN MORE THAN ONE CUP OR TROPHY IN ADULT CLASSES 14-45 AND CHILDRENS CLASSES 2-13.
5. Exhibits must be shown in exhibitor's own jars, etc.
6. The Judges decision is final, and the Show Organiser has the authority to disqualify any entry.
7. All entries which are not to be auctioned, should be removed by 4 pm.

\* \* \* \* \*

## CHILDREN'S SECTION

AGE TO BE THAT ON DAY OF SHOW AND ALL EXHIBITS MUST HAVE BEEN MADE SINCE 1/9/97

- 1 "Wild Life Conservation" - Collage or painting or drawing (age must be shown) under 15 years.
- 2 Decorated cake, under 8 years
- 3 Decorated cake, under 15 years
- 4 6 fruit buns in paper cases, under 8 years } RECIPE: 4oz Self Raising Flour, 2oz Margarine, 2oz Sugar,
- 5 6 fruit buns in paper cases, under 15 years } 2oz Dried Fruit, 1 egg, a little milk. Creaming method.
- 6 6 fruit scones, under 8 years
- 7 6 fruit scones, under 15 years
- 8 Handicrafts, under 8 years
- 9 Handicrafts, under 15 years
- 10 A drawing/painting (not traced) depicting Edwardian Times, under 8 years
- 11 A drawing/painting (not traced) depicting Edwardian Times, under 15 years  
(Classes 10-11 age to be shown on the front of the picture)
- 12 A miniature cottage garden, no larger than 30cm square, under 8 years.
- 13 A miniature cottage garden, no larger than 30cm square, under 15 years



## ADULT CLASSES

### FLORAL

- 14 1 Patio Pot
- 15 1 Single Rose
- 16 3 roses, each one a distinct variety
- 17 1 spray floribunda
- 18 Pot plant for foliage
- 19 Pot plant for flowering
- 20 6 stems annual flowers
- 21 6 stems Sweet Peas

### FRUIT & VEGETABLES

- 22 3 tomatoes on a small plate
- 23 6 shallots on a small plate
- 24 6 onions from set with 2" tops max.
- 25 6 onions from seed with 2" tops max.
- 26 3 round potatoes on a plate
- 27 3 kidney potatoes on a plate
- 28 6 pods of runner beans
- 29 Bunch of 6 short carrots with tops
- 30 Bunch of 6 long carrots with tops
- 31 Bunch of 3 red beet with tops
- 32 Vegetable Tray, 4 items in 12" square tray  
(quantities as above)
- 33 Any other vegetable

### HORSEHEATH BOOK OF RECORDS

- 34 Longest: Runner bean
- 35 Largest by weight (no more than 2" tops):  
a Onion      b Marrow
- 36 Smallest ripe tomato

### PRESERVES & BAKERY

- 37 One jar of any jam
- 38 One jar of marmalade
- 39 Victoria sponge, using basic recipe with 3 eggs
- 40 Fruit cake cooked in 7" round tin, using the  
following recipe:

### FRUIT CAKE RECIPE:

8oz Self-Raising Flour, 2oz caster sugar, 4oz soft margarine, 2 large eggs, 2tbsp milk, 1tsp mixed spice, 6oz mixed fruit, 2oz chopped glace cherries. Place all the ingredients in a bowl and beat well. Cook in 7" tin for 1-1½ hours at 180°C, 350°F or Gas 4.

- 41 6 bread rolls
- 42 1 plate of Shortbread, using own recipe
- 43 6 cheese scones

### HANDICRAFTS

To have been made since September 1997

- 44 Woodcraft, metalcraft, etc
- 45 Knitting, crochet, needlework, etc

### FLOWER ARRANGEMENT

- 46 Table arrangement - "Penny Farthing" (15 cu.ins)
- 47 An arrangement using 5 flowers and foliage
- 48 A miniature arrangement - "Victorian Brooch"  
(6 cu.ins maximum)

\* \* \* \* \*

### AWARDS

1st : 3 points, 2nd : 2 points, 3rd : 1 point and prize cards

## PRIZES

MANAGERS' OPEN CUP : to be held for one year by the exhibitor who obtains most points (Items 14-48).

VILLAGE CUP : to be held for one year by the exhibitor from Horseheath who obtains the highest number of points or to the second highest if the Open Cup is won by someone from the Village (Items 14-48).

THE LADY MARSHALL CUP : to be held for one year by the exhibitor who obtains the highest number of points in the Floral, Fruit and Vegetable classes (Items 14-36).

THE NEWMAN TROPHY : to be held for one year by the exhibitor who obtains the highest number of points in the Domestic and Handicraft classes (Items 37-45).

THE FRED AIRS CUP : to be held for one year for the best Floral Arrangement (Items 46-48).

THE JOHNSON CUP : to be held for one year for the child winning the Wild Life painting or collage or drawing (Item 1).

THE SCHOOL CUP : to be held for one year by the exhibitor in the Children's Classes who obtains the highest number of points in the Flowers and Domestic section (Items 2-7).

THE STOTT CHILDREN'S CHALLENGE CUP : to be held for one year by the exhibitor in the Children's classes who obtains the highest number of points in the Handicraft and Art section (Items 8-13).

## ENTRY FORM

Please cross appropriate square to indicate classes entered.

1	2	3	4	5	6	7	8	9	10	11
12	13	14	15	16	17	18	19	20	21	22
23	24	25	26	27	28	29	30	31	32	33
34	35	36	37	38	39	40	41	42	43	44
45	46	47	48							

Name: ..... Total entries: .....

Address: .....

Please tick: OAP .....

Give age (if under 15): .....

**THE HALL WILL BE OPEN FOR ENTRY FORMS AND FEES ON SATURDAY 29th AUGUST FROM 2pm-4pm. ALL ENTRIES MUST BE EXHIBITED BETWEEN 9.30 am AND 11.45 am ON SUNDAY 30th AUGUST AS INDICATED ON THE ENTRY FORM SUBMITTED ON SATURDAY 29th.**



# **Horseheath Annual Show Schedule**

**Sunday 25th August 2002**  
**Viewing open 2.30pm**



2009

# HORSEHEATH HEY DAY

**CHANCE OF  
A LIFETIME**

**WIN A  
FLIGHT**



**WIN AT GOLF  
TEAS AND BAR  
TOMBOLA  
THROW THE WELLY  
WIN AT DARTS  
CHILDREN'S RACES  
FORTUNE TELLING  
BOWLING FOR THE PIG  
DECORATED HAT COMPETITION  
MEMORIES AND BYGONES**

**AND LOTS MORE**

**2PM SUNDAY SEPT. 13TH**

**FAMILY FUN FOR ALL**



AND THEY'RE OFF !!.....

# THE HORSEHEATH EASTER BONNET RACE NIGHT



7.30pm. EASTER SATURDAY

26th MARCH

TICKETS £2.50 including RACE CARD  
AND CHICKEN 'N CHIPS SUPPER

PRIZE FOR BEST LADIES

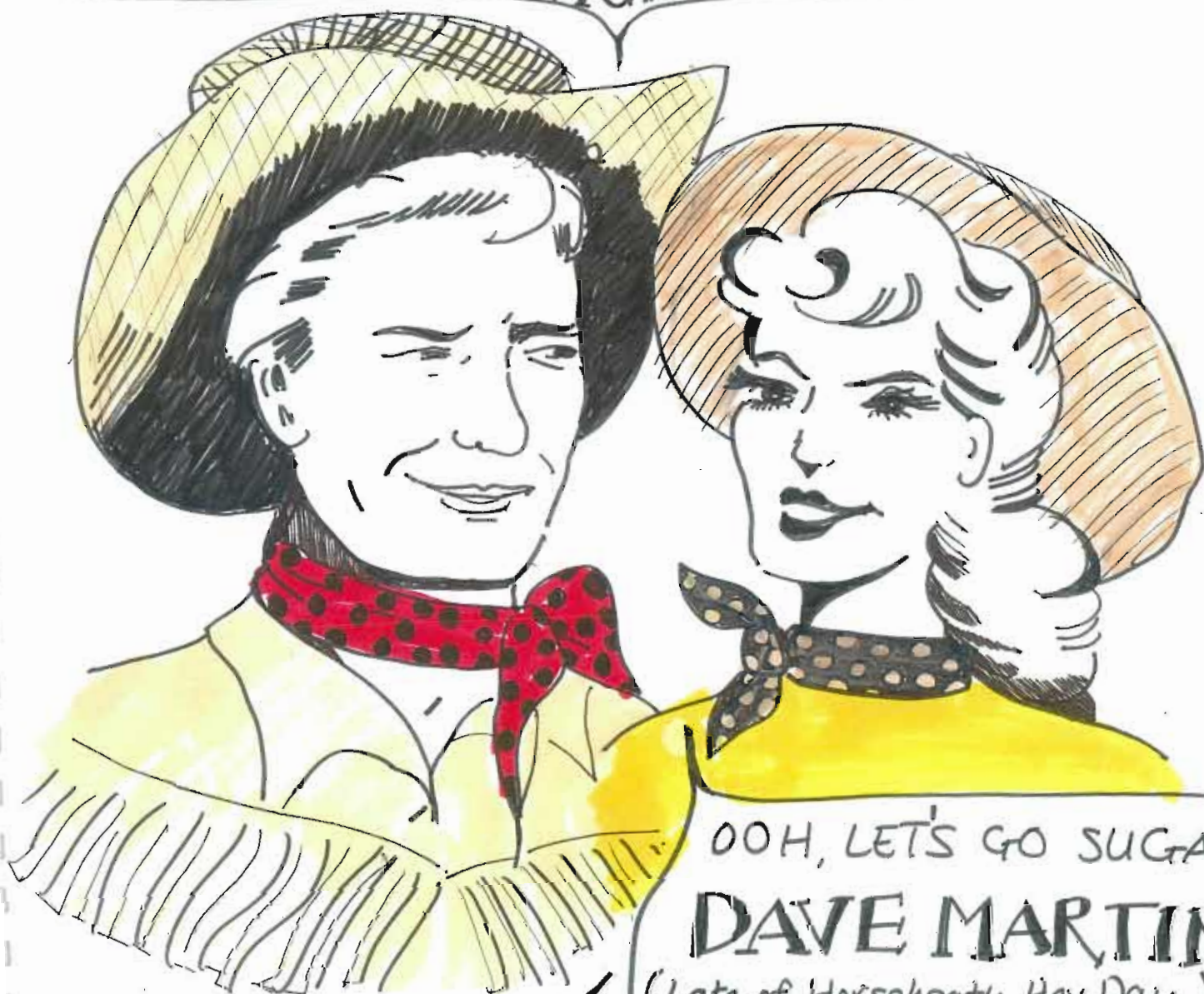
AND BEST MANS HAT.....

BAR OPEN, AND RAFFLE

...so put your best Easter Bonnet on .... and  
see you there !



HEY HONEY, I HEAR THAT ON  
SATURDAY **APRIL 16th** AT THE  
HORSEHEATH VILLAGE HALL THERE IS A  
**COUNTRY<sup>n</sup>WESTERN**  
NIGHT



AND THERES A  
**SOUTHERN FRIED  
CHICKEN SUPPER**

SEE YOU THERE  
PARTNERS!

OOH, LET'S GO SUGAR  
**DAVE MARTIN**  
(Late of Horseheath Hey Day)  
IS PLAYING FROM  
**7.30**. until LATE

**£5** per Adult.  
(FOOD INCLUDED)





*Village Hall Appeal*

*SPONSORED*

# CRICKET MATCH

*3 games for all the family*

*SUNDAY AUGUST 14th at HORSEHEATH CRICKET CLUB*

*• 11am Children (Under 13) • 1:30pm Ladies • 4pm Gentlemen •*

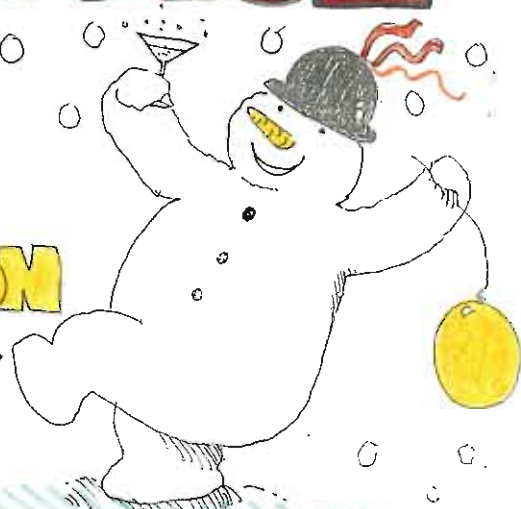
*BUY A COMBINED LUNCH & TEA TICKET - £6 per FAMILY - FROM ESTHER PEARSON  
OR STUART MILLER. IF YOU WOULD LIKE TO PLAY - RING ESTHER C. 892962  
OR STUART C. 893250*



# GRAND CHRISTMAS DRAW & DANCE

MANY  
PRIZES  
TO BE WON

100 CLUB DRAW  
£100 PRIZE



HORSEHEATH VILLAGE HALL  
FRIDAY 19th DECEMBER

8 p.m.

STARTIME DISCO

BUFFET AND BAR

TICKETS £2.00

8 'till late

WITH MUSIC FROM

“Tequila  
Sunrise”

BAR & BUFFET

TICKETS £6 EACH

From Horseheath Post Office (01223) 891251

Or John on (01223) 893474

**VALENTINE**

♥ **DANCE** ♥

HORSEHEATH VILLAGE HALL

FRIDAY 14th FEBRUARY





# ELVIS

## IN HORSEHEATH

**August 24 at 8pm**

Village Hall ★ Bar open ★ Food available

Tickets £3 from the Post Office or on the door



# **MayDay RACE NIGHT**

**Come and win some money**



**Saturday May 1st  
7.30pm**

**Horseheath Village Hall  
FOOD AVAILABLE, BAR**

**Tickets from the Post Office**

NO  
FALSE STARTS  
OR VOID  
RACES!  
GUARANTEED





# ELVIS IS BACK

**August 24 at 8pm**

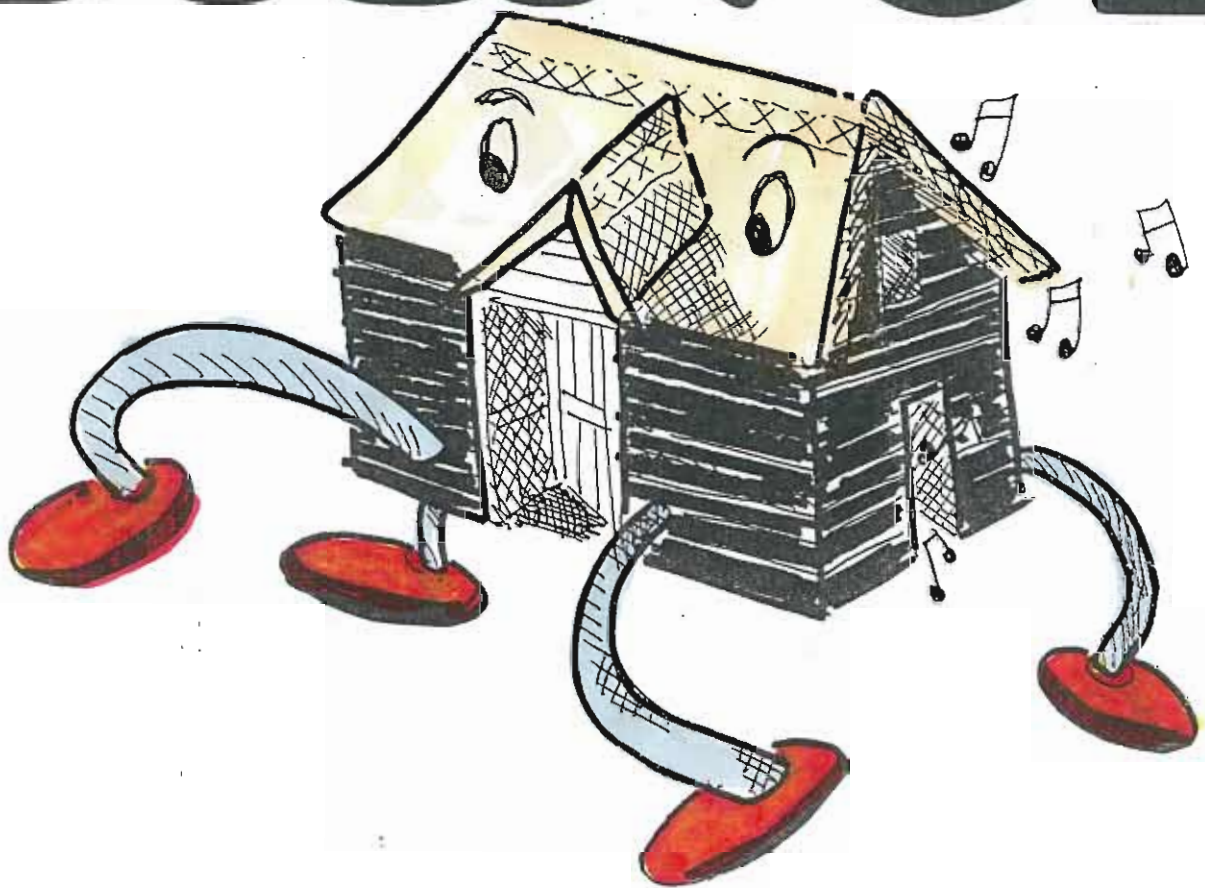
Village Hall ★ Bar open ★ Food available

Tickets £3 from the Post Office or on the door





# BARN DANCE



♪ ♪ Fun for all the family ♪

**SATURDAY, 13th JUNE at 7.30pm**

**at MANOR FARM, HORSEHEATH**

**Dance to 'The Now Then Band'**

**\* BAR \* BUFFET \* RAFFLE \***

**Tickets from the Post Office Adults £6. children £3**

**At Horseheath Village Hall**

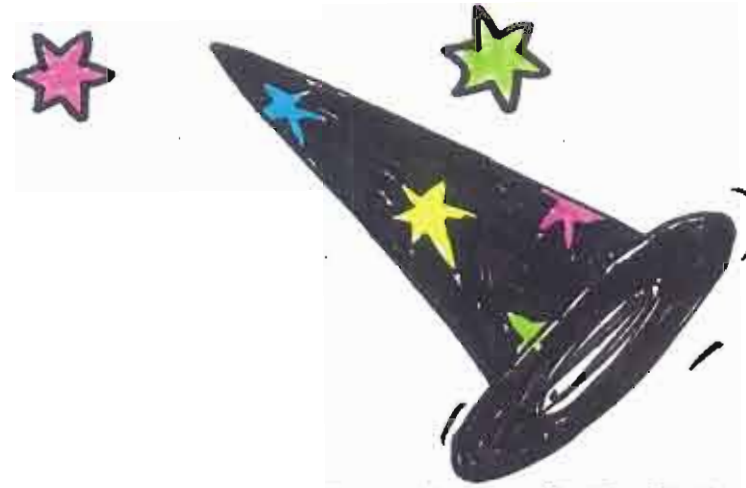
# **Hot Latin JAZZ**

**Saturday  
November  
20th**

**Dance to  
SAMARA**

*LIVE from  
London  
& 'The Junction'*

**Starts 8pm, Hall opens 7.30pm  
Tickets £4 - Pete Brain 0223 894402  
or David Griib 0223 89260**



# **GRAND WITCH (WHIST) DRIVE**

Friday 29th October in The Village Hall, Horseheath  
Starts at 7pm followed by Social Evening  
50p entry Prize Raffle



# **BONFIRE BONANZA**

**Fireworks display starts 7pm + Barbecue & Bar**  
**Friday 5th November at The Village Hall, Horseheath**  
**Free entry - All fireworks gratefully received**





SUPPORT OUR MILLENNIUM WOOD



AT A

**CHRISTMAS**

COFFEE MORNING  
SATURDAY 21<sup>st</sup> NOV  
10am ~ 12pm.

HORSEHEATH VILLAGE HALL  
BRING + BUY CAKE STALL  
+ CHRISTMAS GIFTS



2008



Please come to the...

**HORSEHEATH MEMORIES**  
weekend

September  
13th and 14th

at The  
Village Hall

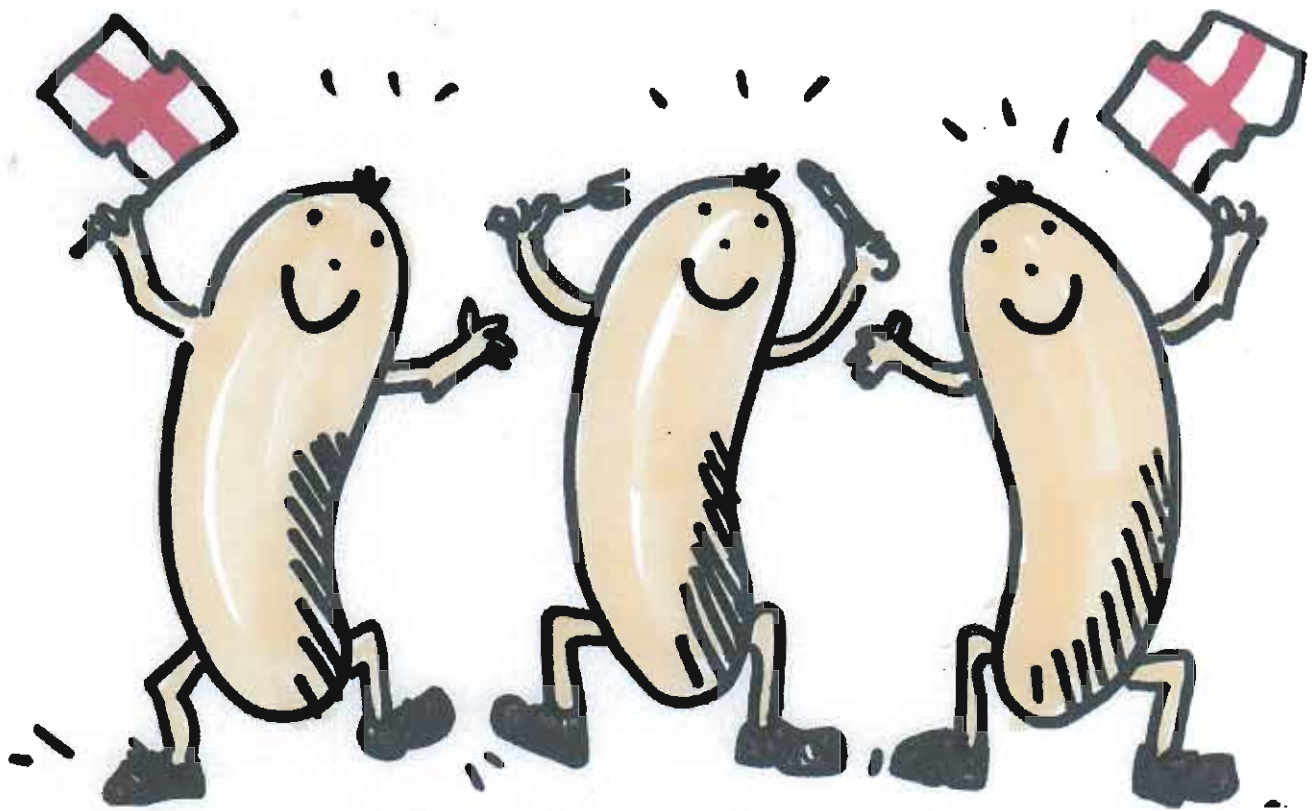
**Opens 2pm on Saturday 13th plus 10am-6pm Sunday 14th**  
See over 750 old photos, including 100's collected since last year, and the rest of  
The Horseheath Archives collection, plus some old vehicles, tools, bygones and artefacts.  
Watch old village films including several new ones since last year and link up your family tree.  
Learn about the witches, the imps and the knights at Horseheath Hall.  
Find out what your house looked like years ago, or what was there before, or who lived in it.  
**Photo and film DVD's for sale + bar and teas + a raffle**



Bring your question on current affairs to our chairman Paul Banks and a panel of local experts including Angela Wright, Duncan Keys and Sam Agnew at 7.30pm on Saturday November 21st at Horseheath Village Hall

*Entry £5 includes cheese and biscuits. Bar open.*

# Celebrate ST. GEORGE'S DAY



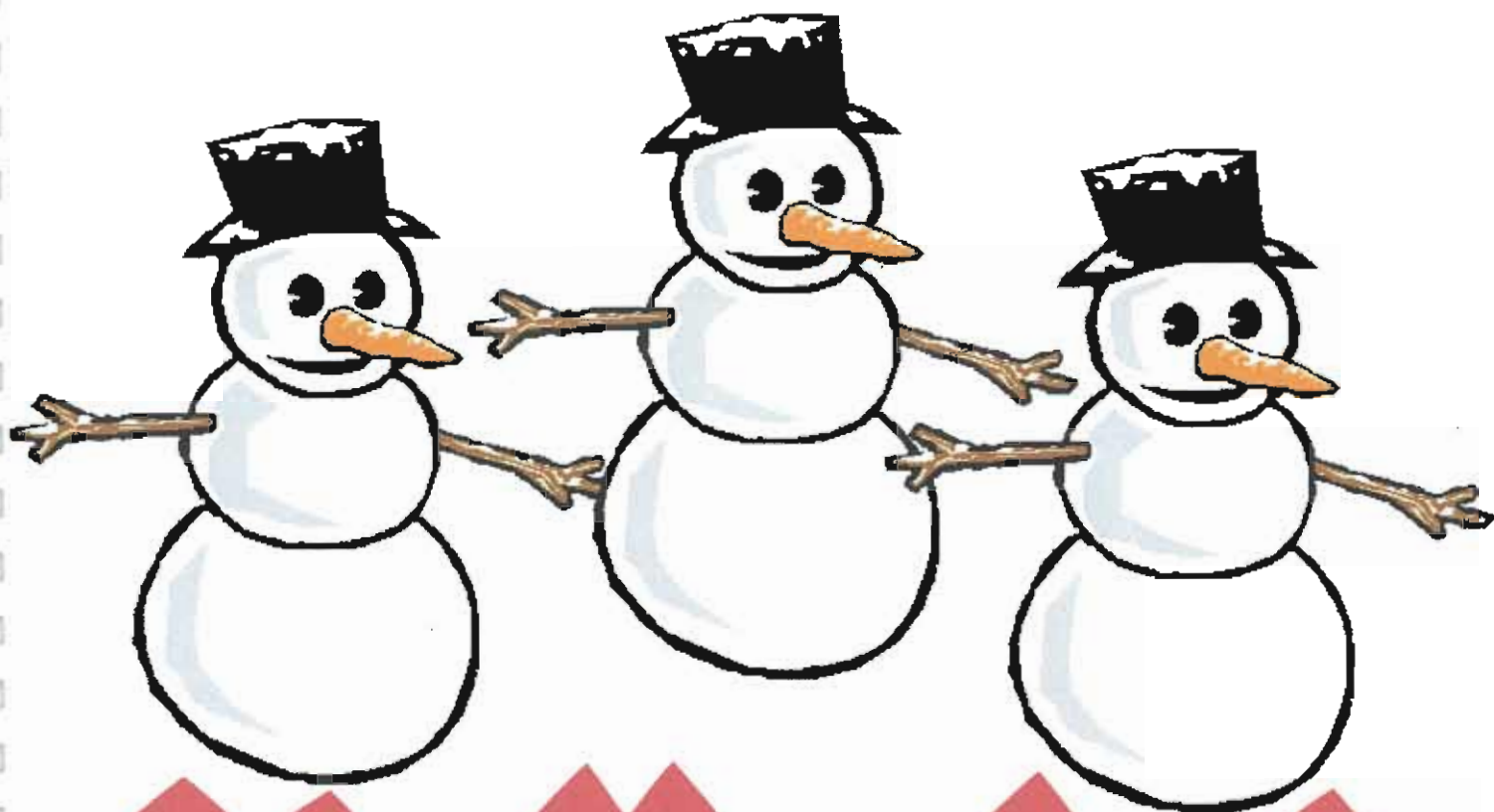
**Bangers and mash supper  
+ pub games**

**at Horseheath Village Hall**

**April 24 at 7.30pm**

Reserve your meal with Teresa on 893757 by April 23





# XMAS PARTY

Take a break, bring your family and friends - come and join us for carols round the tree, hot chestnuts, mincepies, etc, and traditional party games

**Horseheath Village Hall on**

**Saturday December 19th at 6.30pm**

**FREE admission ~ Bar open inc. mulled wine**





# QUIZ NIGHT

Come and win a prize on Friday March 25th.

Bar open 7pm for a 7.30 start at

**Horseheath Village Hall**

*Entry £5 (includes soup) available from Horseheath P.O.*



## BEGINNERS PILATES "TASTER SESSIONS"

These relaxed and informal 90min sessions are to introduce the fundamentals of Beginners Pilates. Including the importance of good core stability and strengthening the body from the inside out.

**THURSDAY 19<sup>TH</sup> MAY**

**HORSEHEATH VILLAGE HALL 10:15 – 11:45**

**THURSDAY 26<sup>TH</sup> MAY**

**HORSEHEATH VILLAGE HALL 10:15 – 11:45**

- Maximum 8 people per session
- Cost £5 per person

**IF YOU ARE INTERESTED IN ATTENDING,**

**CALL SU MATTHEWS**

**ON 07986 692334 / 01223 891768**

**TO BOOK YOUR PLACE.**



*In celebration of the*

*Marriage of  
His Royal Highness Prince William of Wales, K.G.  
with  
Miss Catherine Middleton  
at Westminster Abbey  
on Friday, 29th April, 2011*

*You are cordially invited to a celebration Tea Party  
At Horseheath Village Hall at 3pm*

A reply is requested to HVCA:

\*Adrienne - Tel 891691      \*Nita - Tel 893 250

\*Christine - Tel 891 086      \*Mary - Tel 971 360

**Dress code:  
Princes & Princesses  
welcome!**

# A NIGHT IN GAY PARIS


Tickets £15 each  
for 3 courses and  
glass of wine or  
£26 per couple  
from Adrienne  
891691  
or Nita 893250

Dress:  
wear a beret !

Wine & dine  
at Bistro  
Francais  
on Friday  
March 2nd  
at 7.30 for  
8pm

© HORSEHEATH  
VILLAGE  
HALL

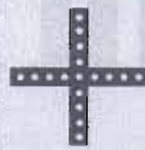




**DOUBLE BILL!**

**Horseheath Village  
Community Association**

**Village  
Hall  
AGM**



**Annual  
Parish  
Meeting**

**Friday 11<sup>th</sup> May at 7.30pm  
at The Village Hall**

**Come and find out what's  
happening and have your say.  
Doors open 7pm    Bar and snacks**



# JUBILEE TEA



Come and Celebrate  
**THE QUEENS**  
**DIAMOND JUBILEE**  
**SUN JUNE 3rd 2-4pm**

ROYAL  
RAFFLE

children  
come as  
Kings or  
Queens!

Please bring a plate  
of food to share

**BAR OPEN**



©  
HORSEHEATH  
VILLAGE  
HALL



about 1980



The prizewinners at Horseheath were (left to right) Pauline Newman, Brian Mizon, Patricia Andrew and Jefferey, Don and Ann Harvey.

## SCHOOL GOVERNORS SAVE VILLAGES' GARDEN SHOW



Giving it all they got at Horseheath Show are Matthew Wright (left) and Edward and Thomas Corbett.

RATHER than see the Horseheath Garden Show lapse, as the Friends of the School couldn't organise it this year, the governors took over.

With Mrs Joan Johnson and Mrs Barbara Davies as main co-ordinators the show was held on Saturday at the village school.

It was opened by the Rev Vivian Ryder, chairman of the governors, and he expressed thanks to all who had helped with the show and fete, which has been held for the past 17 years.

It is hoped about £180 was raised by the show for the governors' fund, responsible for the upkeep of the school.

The main winners of the show were: Pauline Newman — children's challenge cup, Brian Mizon — Village cup, Patricia Andrews — Lady Marshall cup, Jeffery Harvey — School cup, Don Harvey — manager's open cup and Ann Harvey — Newman trophy.

As well as the garden show there were a variety of side-shows to entertain the visitors.





The prizewinners at Horseheath, from left to right, Ann Harvey, who collected the cup on behalf of her husband Don, Jeffrey Harvey, Reg Davies, Adam Tulloch, and school headmaster Mr L. Barley, who presented the prizes.

## Young Jeffrey sweeps the board

HORSEHEATH's annual garden show and fete proved successful again, although the dry season meant entries were down in the garden show.

The event is held at the school to raise money for school equipment and this year it raised £114.

The fete featured all the usual stalls, plus an egg-throwing competition.

The trophy winners in the garden show included young Jeffrey Harvey, who swept the board in the children's section.

He won the Stott children's challenge cup, for

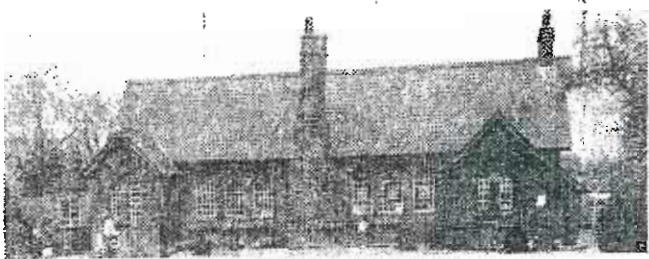
handicraft and art classes, the school cup for flowers and domestic classes and the Newman trophy for domestic and handicraft classes.

His father Don won the managers' open cup for the most points in the show, while the village cup for the

next highest went to Reg Davies.

The Lady Marshall Cup for the highest number of points in the floral, fruit and vegetable classes for anyone who had not won another trophy went to Adam Tulloch.

819183



Horseheath primary school

## Parish rate to boost school buying plan

**CEN 14.6.1984**  
THE ambitious project by Horseheath villagers to buy the local primary school, which closes in July, has been backed by the parish council which is to levy a penny rate.

The village has been offered the Church of England school — which has only 25 children on its roll — for use as a village hall for the knockdown price of £25,000 by the C of E Diocesan Finance Board.

The scheme has the full support of the parish council which has decided to give a grant of £3,700 towards the

purchase over the next 10 years.

The parish council chairman, Mr James Johnson, said the sum was equal to a penny rate.

Mr Johnson said that rumours around the village that the council was levying a 4p rate were without foundation.

"We would not have done that because it's a bit rough on people who can't afford it," he said.

Mr Johnson said that a 4p rate would have added £8 a year to the rates for a property with a rateable value of £200.

## Village can buy school

**CEN 14.6.1984**  
HORSEHEATH has been given the go-ahead to buy its disused village school and turn it into a village hall.

South Cambridgeshire District Council has agreed to grant the Village Hall Working Party a £21,000 interest-free loan.

The money is to be repaid over 10 years with some of the funds expected to come from the sale of land at the site.

The villagers have raised £1,000 towards the project since March and the parish council has given a grant.

"This will just make all the difference to the village," a delighted Horseheath councillor, Catriona Ogilvy, told the South Cambridgeshire council.

## Grant brings Horseheath's hall plan a step nearer

**CEN 28.7.1984**  
PLANS to convert Horseheath Primary School into a village hall have come a step nearer now a £4,000 grant for the project has been approved.

Horseheath's 420 villagers are hoping to buy the school, which closed down last week, and spend £2,000 to convert it.

Members of South Cambridgeshire District Council's General Purposes Committee were told that the village had

been offered the Church of England School for the knockdown price of £25,000 by the Diocesan Finance Board.

The scheme has the full support of the parish council, which has decided to grant £3,700 towards the purchase over the next 10 years by levying a penny rate. Local fund-raising is also planned.

### Blow

The members, who approved the grant, were told the village did not have a hall

for meetings and the school had always been the venue for village events in the past.

Cambridgeshire Community Council is also very much in favour of the hall, which it says is vital for a small village which has already suffered a major blow by losing its school.

Coun Catriona Ogilvy said: "The children who attended Horseheath now go to three different schools. If they don't have somewhere to get together for their Brownies and so on the village will be split."

## Village hall loan hope

### grows

**CEN 8.8.1984**  
HORSEHEATH villagers will soon have their village hall if a £21,000 interest-free loan is approved.

The villagers want to buy the primary school which closed down in July and convert it into a village hall.

The Church of England school is up for sale at £25,000 and South Cambridgeshire District Council has topped a £4,000 grant it made in the summer — as well as offering an interest-free loan.

The council's general purposes committee agreed to give a £2,000 grant to pay for the conversion and is asking its finance committee to approve the loan.

Coun Bill Kunish told members that the village has no community hall.

"It is one of the few villages where if the school goes completely, they will have nothing," he said.

Coun Peter Brooks said Horseheath villagers should not miss the chance of buying the school.

# Horseheath's fight to save a village in decline

Story: Tony Stickley  
Pictures: Dick Harding

AT first sight Horseheath near Haverhill appears to be a village in decline.

In the past year the tiny Church of England primary school closed because of dwindling numbers and now the Red Lion pub and the Chequers at nearby Streetly End have shut up shop.

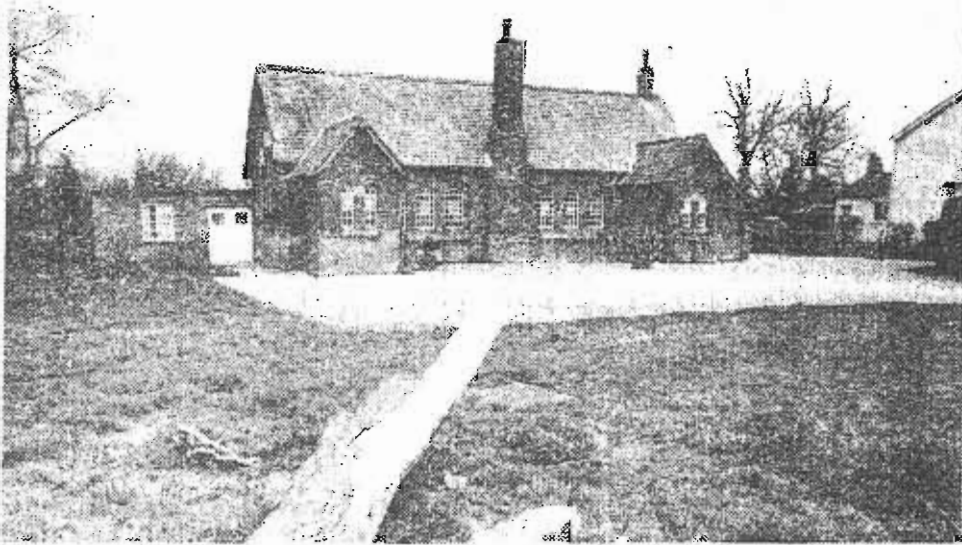
But Horseheath is fighting back.

Only last month the villagers completed the purchase of the school building for use as a village hall for the knock-down price of £25,000 from the Ely Diocesan Finance Board.

Parish council chairman Mr James Johnson said: "It is providing a focal point which went when the school and the pub closed."

"People put a lot of energy into this. The village is not in decline. It is thriving and active."

Mr Johnson thought the pubs may have closed



The school now closed

because people could not afford to stay out drinking all evening and the school had become uneconomic to carry on with so few children.

The 25 youngsters on the roll were transferred to nearby Castle Camps.

Haverhill solicitor Mr Tom Harrison, who lives in the village, said the hall was paid for through an interest-free loan, grants and fund-raising by the

villagers themselves.

Mr Harrison, a member of the village hall committee, said the purchase of the school building showed the strength of commitment in the village.

## Vigorous

"People in Horseheath are extremely community-minded," he said.

The decision to buy the

building was taken after a long campaign to save the school from closure had failed.

Mr Harrison said: "We put up a vigorous fight. It went all the way to the Secretary of State, Sir Keith Joseph."

"It is amazing the depth of feeling in a local community when you try to take something away from them."

D2468584





The Red Lion now boarded up

D2468581



The remains of a filling station in Horseheath.

D2468520



Horseheath on the left and the bypass (right)

D2468590



# WINCEY OPENS VILLAGE HALL

H.Echo 27.3.1986

IT was a sad day for Horseheath when the village school closed in 1984, but there was a bright side on Saturday when the building was officially opened as the new village hall.

TV personality Wincey Willis, TV-AM weather girl and an adjudicator on the Channel 4 Treasure Hunt programme, shared the opening honours with Nancy Thoday, of Abington, who taught at the school for many years.

Wincey Willis spent more than an hour signing autographs and posing for photos and talking to some of the 200 villagers and friends. She congratulated the village on what they had achieved and Mrs Thoday spoke about the history of the Victorian school.

Horseheath didn't have a village hall until the old school was taken over and converted. Much of the work has been done by voluntary effort, including new fitted kitchen, bar, complete redecoration and internal alterations.

It has cost the village £25,000 to purchase the building from the Church authorities, some of which was met from grants.



Wincey Willis opens Horseheath's new village hall. On the left is Peter Wilton, chairman of the hall management committee, and on the right is Nancy Thoday, who shared the official opening duties.

## Horseheath to keep land

H.Echo 19.6.1986  
HORSEHEATH may well not have to sell land to help pay off a loan they received to buy the former school as a village hall.

An interest-free loan of £21,000 was made by South Cambridgeshire District Council to the village hall working party on the proviso that funds from the sale of adjoining land

would be used in repayment and the remainder be paid over ten years.

So far £4,330 has been repaid, but the newly-formed management committee would prefer not to sell the land, expecting to have no difficulty meeting the debt over ten years.

The council's finance committee were being

recommended this week to approve the arrangement on the grounds that the land, part of the old school premises, was an important facility of the village hall and should not be sold unless the village couldn't repay the balance of the loan of £16,670 in ten years from the original agreement.

## Village told to start repaying loan for hall

CEW 28.11.1986

A GROUP which secured a free loan of more than £16,000 two years ago to build a village hall at Horseheath, between Linton and Haverhill, has been told to start paying it back.

Members of South Cambridgeshire District Council General Purposes Committee were told that, despite a letter insisting that at least the first of 10 instalments should be paid, nothing has been done.

A local councillor for the area, Coun Catriona Ogilvy,

said she was surprised to hear the village hall working party had not started to pay back the money.

### Proceeds

"I shall certainly be encouraging them to start paying. It's just a technicality, but the council have been extremely generous about the loan," she said.

The council approved a free loan of £21,000 to buy the former village school for use as a village hall back in 1984.

Grants and fundraising proceeds were handed to the council, leaving a loan balance of £16,670.

## Feted to win



A VIDEO camera was in use at Horseheath's 22nd annual fete. Garden produce was on display, too, with trophies to be won, as can be seen above.

☐ Story and more pictures on Page 4.



# Fete is captured on video



□ Welly-throwing at the Horseheath fete.

**THE 22nd annual village fete at Horseheath on Saturday was captured on video camera as the first event of a filmed year in the life of the village.**

The fete, which raised £330, was well supported by villagers, as was a garden and produce show.

It was held in the village community centre, formerly the village school which was bought and converted by villagers three years ago.

## Up to date

Village hall association secretary, Mr John Greenwood said the money raised would be used towards general expenses as well as repaying a loan which still has eight years to run.

As the the association was well up to date with funds to repay the loan, Mr Greenwood said it hoped to use some of the money to provide children's play equipment and seats in the village.

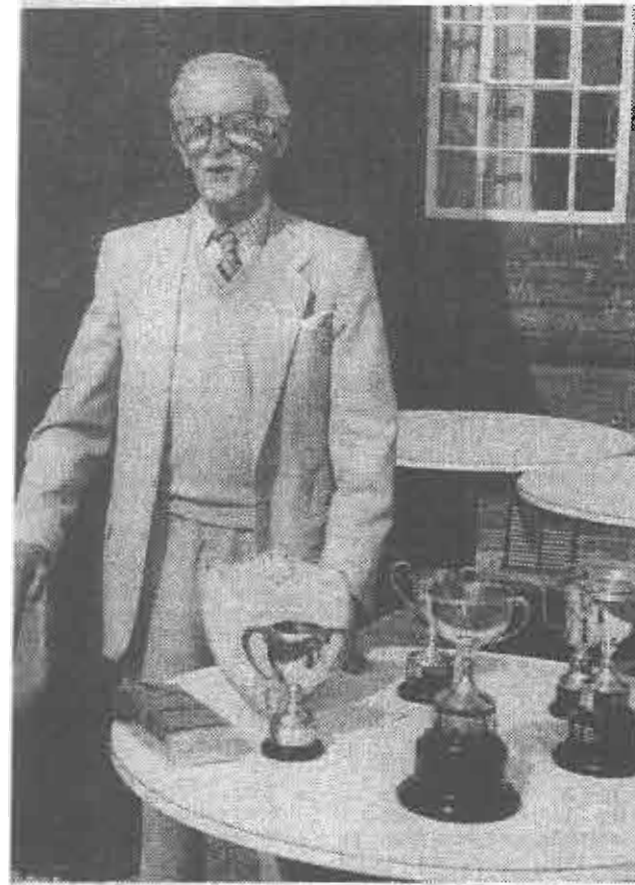


□ Emma Banks is taken for a ride.

The video film will record all events in the village for a year.

Then it will be copied and shown publicly or copies bought.

# 'Pop puts show on road to £600 profit for the village hall



ONE of Horseheath's oldest residents Mr George (Pop) Richards opened the 23rd annual Horseheath garden show and fete on Saturday.

Around 230 people attended the event and there were some 150 entries in the garden show. It is expected that a profit of around £600 will result for the Horseheath Village Hall fund.

Mr Richards, who is in his late 80s started off the proceedings with a total of 24 stalls and sideshows on offer.

Two young girls from Horseheath are in for a real treat with a 45-minute flight from Stansted airport. Air traffic controller Mr Tony Denchfield donated the flight as a prize and it was won by local farmer's wife Mrs Helen Cornish, who



Plenty of takers for John Greenwood's tractor rides

gave it to Sandra Pearson and Sarah Wright.

In the garden show the main winners were: Open Cup - John Whittaker, Village Cup: Mrs Caroline Hayes and Don Harvey; Lady Marshall Cup - J. Tarbit of Balsham; Newman Trophy - Mrs Marion Corbett; Childrens section: School Cup - Rosie Miller (6), Stott Cup - Ted Flanagan (6).

Mr. George (Pop) Richards opens Horseheath show



# Haverhill

## Weekly News

THURSDAY, APRIL 13, 1989

15p where purch

### Children fight to save their play area

CHILDREN at Horseheath are organising their own protest to try to stop a recreation area in the village being developed for housing.

South Cambridgeshire District Council has already granted "deemed consent" for the land, which is next to the village hall, to be developed to provide small units for first-time buyers.

#### Protest

But the young protesters, who use the area for football and other activities, still hope they can persuade the council not to go ahead with the scheme.

One of those leading the protest is 12-year-old Rebecca Harrison who is a

member of the Saturday Club which has met at the village hall for the past four years. Around 35 youngsters, mostly aged between 5 and 11 years, belong to the club and use the area concerned to play football.

"There is nowhere else for children to play and we would lose a lot of members if the boys could not play football.

"When we were told we could not go to the meeting we were rather cross really because nobody had thought about what we felt. It is the children who are going to miss it the most but they did not want to listen to us.

"We are really going to fight it and we have already started a petition up to hand to South Cambs. We still hope we can change their minds, it is going to ruin our village," Rebecca said.

### Fighting for their play area



Thirteen-year-old Rebecca Harrison, of Horseheath, holds up the petition against building homes on the recreation land — and she has plenty of friends to back her up. For the full story, turn to Page 3.

16028918



## Decision day for village hall grant

**THE 16th 1990**  
HORSEHEATH Village Community Association could be a thousand pounds better off today if South Cambridgeshire District Council decide to give them a grant towards the installation of a new floor in the hall.

The work is almost complete with villagers having done much of it themselves, by taking out the old floor and joists. At the moment the hall cannot be used, but the association hope to finish the work as soon as possible to avoid any loss of income.

In 1984 the district council gave the association a grant of £6,000 and an interest-free loan of £21,000 to enable the old village school to be bought for use as a hall.

The parish council have given their 'enthusiastic support' to the project, which they consider to be essential.

The general purposes committee have suggested a grant of £1,000 but have described the application as one of low priority.

## Noise level threat to village hall

**OEN 28 3 1990**

**HORSEHEATH** villagers have narrowly saved their village hall public entertainments licence — after a resident complained events were too noisy.

An end was threatened to Christmas parties, race nights and village dances.

But South Cambridgeshire District Councillors decided to grant a licence for six months and monitor sound levels.

It is the first time the hall's public entertainments' licence has been challenged.

Mr Mervin Suggett, of Forge Cottage, Horseheath, a resident for five years, wrote objecting to late night disturbances in a residential area.

Village Hall Committee member, solicitor Mr Tom Harrison, said he was confident the licence would be renewed in six months.

HAVERHILL ECHO, Thursday, August 23, 1990



Horseheath garden show winners, back row, left to right, Caroline Hayes, Terry Newman, Reg Davis, Jenny Richards and Marion Corbett; front, Rebecca Harrison and Rosie Miller.

## Good entry for show despite weather

HORSEHEATH staged its 25th garden show and fete on Saturday, raising more than £750 for the village hall. Considering the drought, there was a good entry of garden produce.

Caroline Hayes won the Managers' Open Cup, Terry Newman the

Village Cup and Reg Davis the Lady Marshall Cup, awarded for most points in the flower, fruit and vegetable classes respectively.

Marion Corbett won the Newman Trophy for domestic and handicraft points, Jenny Richards the Fred Ains Cup for the best floral arrangement,

Rebecca Harrison the Stott Cup for most points in the children's handicraft and art section and Rosie Miller the School Cup for the flower and domestic section.

Villager Paul Banks, dressed as Postman Pat, opened the fete and went around distributing sweets.





Facing the fun . . . Suzanne Rowe, left, and Beck Harrison at Horseheath Fete.

Picture: Paul Craske 4229917a

## Fetegoers banish the blues over lost clown

CEN 6.8.1991  
THE story of a stolen clown had a happy ending as crowds flocked to Horseheath fete and flower show.

Mean thieves took a nine-foot clown advertising the fete from its site next to the A604.

But organisers had the last laugh as more people joined in the fun as a result of publicity about the theft.

The fete, which was held in

the village hall and recreation ground, raised money for the Horseheath Village Community Association. Some of the cash will go towards improving hall toilets.

### Dragon

Association chairman Michael O'Connor said cash was still to be been counted, but he was sure they would be close to their target of £1,000.

The fete's theme this year was clowns, and youngsters and adults were encouraged to dress up in a variety of colourful outfits.

Other entertainments included a kung-fu demonstration, a Chinese dragon and a display by Haverhill's Sharon Metcalf School of Dancing.

"It was a blaze of colour and festivity, a good fun day and a story with a happy ending," said Mr O'Connor.

■ **FREE FIX** ...  
Horseheath  
village hall will  
receive the new  
roofing  
materials  
through the Fix  
That Hut  
campaign.

OP.



## Village hall gets re-roofing boost

ESSENTIAL repairs are to be carried out to the roof of Horseheath village hall after it received free roofing materials from a building company.

The hall will receive the supplies from Ruberoid Building Products through its Fix That Hut campaign, which seeks out village buildings that are at the heart of local communities but in need of repair and provides free roofing and waterproofing materials.

Horseheath Village Hall is the latest to be chosen because of its valuable contribution to the community.

It was once the local primary school but in 1985 it was purchased by the Community Association and converted for use as a village hall.

Siobhan Harrison, of the Horse-

BY Jo Deeks

Email: [editorial@haverhillweeklynews.co.uk](mailto:editorial@haverhillweeklynews.co.uk)

heath village hall committee, said: "We are really pleased that our hall has been successful and is going to receive the much-needed free roofing materials.

"It has always been central to Horseheath and with help from Ruberoid, it will continue to provide the local community with a meeting place for many years to come.

"We would really like to thank everyone at Ruberoid for their kind donation and contribution to restoring our hall."

Anyone who would like to put forward a project to the Fix That Hut campaign should contact Kelly Mullin at [kmullin@ruberoid.co.uk](mailto:kmullin@ruberoid.co.uk)